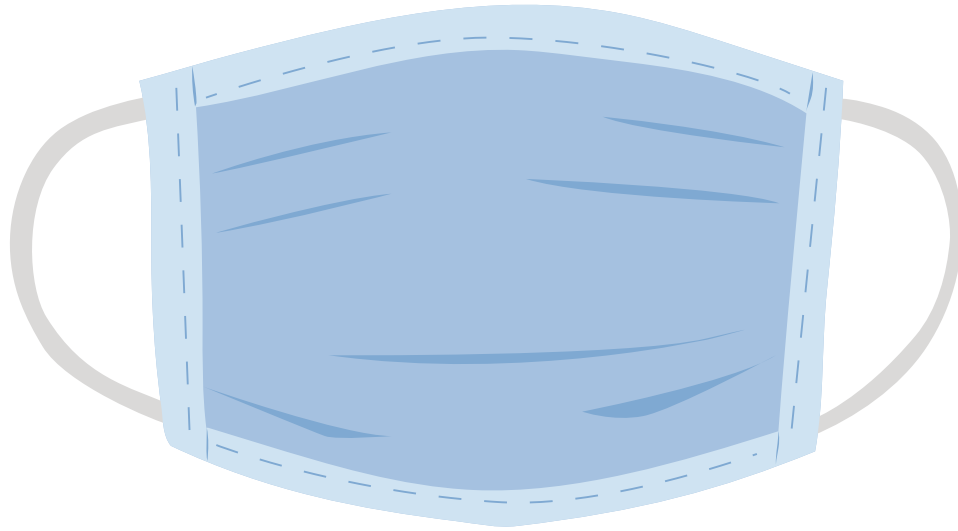


MASKS REQUIRED FOR ENTRY



PER CITY OF NORFOLK MASK ORDINANCE PASSED ON NOVEMBER 23, 2020

All individuals age five and older must wear a mask when they are in an indoor space that is open to the public unless six feet of separation from others can be achieved at all times

Masks are not required for those:

- Seated at a bar or restaurant while consuming food or beverages
- Engaged in exercise
- Engaged in an occupation that prevents the wearing of a mask
- Purchasing goods or services that require a mask be temporarily removed
- Speaking to an audience where six feet of distance is maintained
- Seeking federal, state or county government services
- Individuals who cannot otherwise wear a face covering because of a medical condition, a mental health condition, or a disability that prevents the wearing of face coverings

For more information, visit www.norfolkne.gov

